



# *Web Contents*

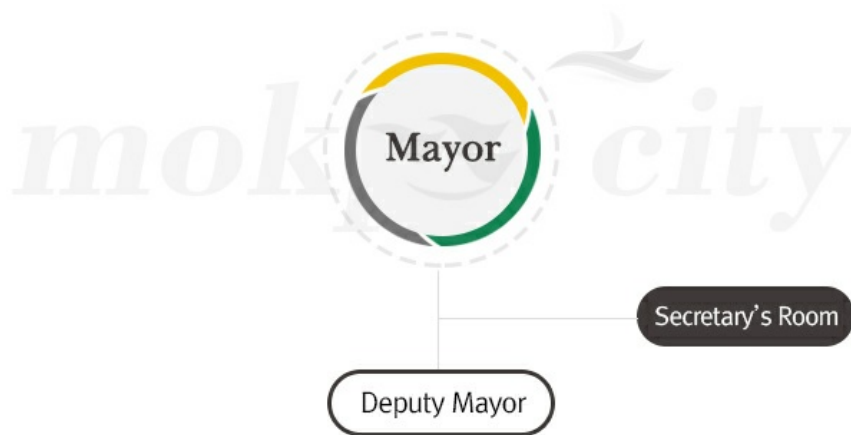
---



2018년 02월 19일 11시 17분

# 목차

|   |   |
|---|---|
| 목차  | 2 |
| Organization  | 3 |
| Planning Management Bureau                          | 3 |
| Local Self-Government Administration Welfare Bureau | 3 |
| Tourism Economy and Fisheries Bureau                | 3 |
| Safe Urban Building Bureau                          | 3 |
| Council Executive Office                            | 4 |
| Committee Staff                                     | 4 |
| Parliamentary Team Manager                          | 4 |
| Agenda Team Manager                                 | 4 |
| Public Health Center                                | 4 |
| Public Health & Sanitation Division                 | 4 |
| Health Promotion Division                           | 4 |
| Hadang Branch Health Center                         | 4 |
| Education and Culture Organization                  | 4 |
| Education and Sports Division                       | 4 |
| Culture and Art Division                            | 4 |
| Literature Facility Management Division             | 4 |
| Sports Facility Management Division                 | 5 |
| Education and Sports Division                       | 5 |
| Waterworks & Sewerage Organization                  | 5 |
| Waterworks & Sewerage Administration Division       | 5 |
| Water Division                                      | 5 |
| Sewage Division                                     | 5 |
| Namhae Environment Management Division              | 5 |
| Bukhang Port Environment Management Division        | 5 |
| Urban Development Organization                      | 5 |
| Urban Regeneration Division                         | 6 |
| Urban Development Division                          | 6 |
| Green Park Division                                 | 6 |
| Office  | 6 |
| Environment Facility Management Office              | 6 |
| Vehicle Registration Office                         | 6 |
| Community Center (Community Service Center)         | 6 |



Auditor's Room

Office of Industries

### ✔ Planning Management Bureau

- Planning and Budget Division
- Public Affairs Division
- Tax Administration Division
- Job Policy Division
- Accounting Division
- Information and Communication Division

### ✔ Local Self-Government Administration Welfare Bureau

- Local Self-Government Administration Division
- Social Welfare Division
- Elderly and Disabled Division
- Women and Family Division
- Civil Affairs Office

### ✔ Tourism Economy and Fisheries Bureau

- Tourism Division
- Maritime Harbor Division
- Fisheries Promotion Division
- Agriculture Industry Division
- Environment Protection Division
- Resource Circulation Division

### ✔ Safe Urban Building Bureau

- Urban Planning Division
- General Safety Division
- Architecture Administration Division
- Construction Division
- Transportation Administration Division

## Council Executive Office

- ✔ Committee Staff
- ✔ Parliamentary Team Manager
- ✔ Agenda Team Manager

## Public Health Center

### ✔ Public Health & Sanitation Division

- Public Health Administration
- Drug Control
- Sanitation Management
- Public Sanitation
- Food Sanitation

### ✔ Health Promotion Division

- Health Promotion
- Infectious Disease Control
- Regional Health
- Mother and Child Health

### ✔ Hadang Branch Health Center

- Urban Health
- Mental Health
- Rehabilitation Health

## Education and Culture Organization

### ✔ Education and Sports Division

- Educational Policy
- Lifelong Education
- Sports Support
- Sports Facility
- Sports Marketing

### ✔ Culture and Art Division

- Cultural Support
- Art Promotion
- Cultural Heritage
- Nojeokbong Art
- Children's Library Operating Team

### ✔ Literature Facility Management Division

- Operation
- Center Performance
- Hall Performance
- Facility Management
- Literary House

### ✔ Sports Facility Management Division

- Operation Facility

### ✔ Education and Sports Division

- Management
- Research
- Ceramic Museum
- Science Museum

## Waterworks & Sewerage Organization

### ✔ Waterworks & Sewerage Administration Division

- Water Administration
- Sewage Administration
- Fee

### ✔ Water Division

- Water Supply
- Leakage Prevention
- Electric Generation
- Water Purification
- Water Analysis

### ✔ Sewage Division

- Sewage
- Sewage Maintenance
- Flooding Prevention
- River Maintenance

### ✔ Namhae Environment Management Division

- Management
- Water Quality
- Public Service
- New Urban Environment

### ✔ Bukhang Port Environment Management Division

- Management
- Water Quality
- Public Service

## Urban Development Organization

(<http://www.mokpo.go.kr>)

## ✔ Urban Regeneration Division

- Urban Regeneration Support
- Regeneration Project
- Redevelopment
- Reconstruction

## ✔ Urban Development Division

- Management
- Industrial Complex Construction
- Housing Site Development

## ✔ Green Park Division

- Park Administration
- Park Facility
- Green Flower
- Forestry
- Yudalsan Sculpture Park

## Office

### ✔ Environment Facility Management Office

- Life Environment
- Recycling Operation
- Environment Center Operation

### ✔ Vehicle Registration Office

- Vehicle Registration
- Vehicle
- Fines

## Community Center (Community Service Center)

Yongdang 1-dong, Yongdang 2-dong, Yeon-dong, Sanjeog-dong, Yeonsan-dong, Wonsan-dong, Daeseong-dong, Mokwon-dong, Dongmyeong-dong, Samhak-dong, Manho-dong, Yudal-dong, Jukgyo-dong, Bukhang-dong, Yonghae-dong, Iro-dong, Sang-dong, Hadang-dong, Sinheung-dong, Ogam-dong, Buheung-dong, Buju-dong

# ***MokPo - Si*** ***Web Contents***



시민과 함께하는 희망찬 새목포